

Feature Review

STANLEY[®]

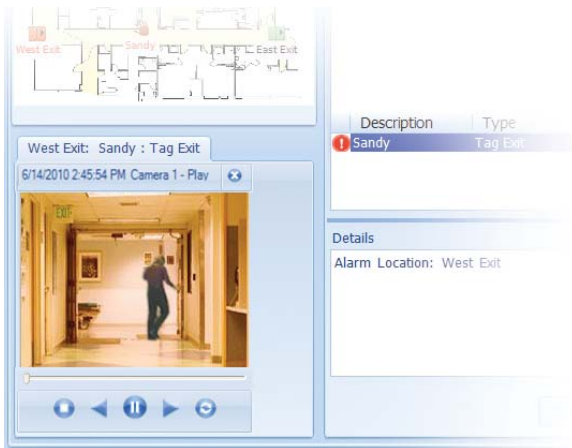
Healthcare Solutions

Integrated CCTV

The integrated CCTV option for the Patient Security system provides users with CCTV images right inside the Hugs[®], Pedz[™] or Passport[™] software. It captures the moments just before and after an Exit alarm, so that you can respond with full knowledge of the situation.

Automatic alarm playback

A picture is worth a thousands words; especially during an Exit alarm when you need to know what's going on *now*.



The integrated CCTV option provides this vital extra information. It lets you see what is happening during an alarm, from any PC in the Patient Security system.

The software automatically displays images from the appropriate camera when an alarm occurs. In addition, you can view live camera images at any time, simply by selecting the camera in the map window.

Key Advantages

- Helps you to identify the cause of an alarm—you know who or what to look for.
- Saves time—provides easy access to stored digital images right from the Hugs, Pedz or Passport PCs.
- Improves post-alarm analysis—CCTV footage is automatically cross-referenced and saved upon an alarm, greatly simplifying analysis of an incident and day-to-day operation (for example, suspicious behavior).
- Saves space and money—no extra CCTV monitors cluttering up the work space.

Images and alarm information are identically time-stamped for archive purposes—no more searching through footage to find the relevant images.

How the system works

The CCTV functionality is provided by the Stanley Security Intivid VIP digital video recorder (DVR) system. The VIP system captures and stores images from your CCTV cameras, and passes them through to the Patient Security Server for the Hugs, Pedz or Passport system.

Setup in the Patient Security software is straightforward. Simply assign a camera to each protected exit. When an alarm occurs, the system will automatically replay images from that camera starting a few moments before the alarm occurred.



Multiple options for implementation

The VIP system can make use of most CCTV equipment already in place. It can take images from older analog cameras, as well as state-of-the-art IP cameras, or a mix of both. The VIP X software that controls the system can be installed on a dedicated VIP system server, or on the Patient Security Server (if using IP cameras).

STANLEY

309 Legget Drive, Ottawa, ON K2K 3A3, Canada Toll free: 877-494-2528 Tel: +1 (613) 287-4553 Fax: (613) 592-4296 Web: www.stanleyhealthcare.com

Healthcare Solutions

© 2004-2011 XMARK Corporation. All Rights Reserved. July 2011. MK50038 Rev 07.